



Stronger Children.
Stronger Families.
Stronger Communities.



A
N
N
U
A
L

R
E
P
O
R
T

2021-2022

Table of Contents



3. Board Chair &
Executive Director Message

4. Merrymount Family
Support & Crisis Centre

5. Year in Review

6. Program Highlights

9. Community Partners

10. Awards

11. Our People

13. Special Events &
Fundraisers

14. Our Generous Donors

15. Financials



Board Chair & Executive Director Message

Dear Friends of Merrymount,

On behalf of Merrymount and our Board of Directors, thank you for your continued support.

So much has changed in this past year, but what remains the same is our dedication to helping families in our community. Merrymount has continued to serve the children and families who rely on our programs and services all throughout the COVID-19 pandemic. Through provincial restrictions, phases of re-opening and shifting priorities, we have thoughtfully and quickly adapted our programs and services to meet the changing needs of families. We have spent this past year listening, learning and adapting what we do to best serve children and families in the London and area community.

More and more families in London and surrounding areas are turning to Merrymount for help. Our community is in crisis. Thousands of families are struggling – with poverty, mental health, trauma, precarious employment, unstable housing and so many more issues. Our infrastructure is overwhelmed, our healthcare system is under unparalleled pressure, and our society is struggling to support children with the highest needs.

That is why every day, when children and families in our neighbourhoods across the city need help, Merrymount immediately steps up to provide support in a province where one in five children and youth face a mental

health challenge. 70 percent of mental health challenges have their onset in childhood or in youth; early intervention is critical in leading to better outcomes later in life. We step up to help children and families receive the mental health supports they require, when they require them. We step up to provide services to our community that go well beyond the government funding that we receive. We step up by supporting 8,000 London and area families every year.

Our organization is no stranger to change. In our 148 years of operation, we have grown, adapted and continued to serve London and area children and families. As we look forward past the COVID-19 pandemic, this situation is no different. Merrymount is resilient and will continue to be the invisible safety net in our community. As an accredited Children's Mental Health Centre, Merrymount strives for excellence in the programs and services we deliver. As our transition back to in-person services continues, we are thoughtfully reviewing and ensuring each one is flexible, meeting the needs of our families, and structured for success.

Our emerging Strategic Plan hinges on this hybrid model and necessary shift in what we do as we shape our 'new normal' and future direction. What will not change is our dedication to serving children and families in need.

Our work has never been so important, and we appreciate your steadfast support.



Paul Romanson

Paul Romanson, Board Chair



Paul Howarth

Paul Howarth, Executive Director

Merrymount Family Support & Crisis Centre

Merrymount Family Support & Crisis Centre was established in 1874 as the Protestant Home for Orphans, Aged and Friendless. When the child welfare system took responsibility for the wardship of orphans in the 1890s, the home began to focus on residential care for children of families in crisis. A new home was built as a Centennial Project in 1967 and at the time of its opening, the name Merrymount was adopted to reflect its non-denominational approach. Today's facility at 1064 Colborne Street was built in 1991.



Merrymount is an accredited Children's Mental Health Centre providing around-the-clock family capacity building and support services, for children aged 0 – 12, across London/Middlesex, Elgin, and Oxford counties. Merrymount provides a wide range of crisis, respite and early intervention mental health services and programs designed to provide children and their families with the skills and knowledge required to face their individual crises, to overcome their difficult circumstances, and lead healthier, happier lives.

MISSION

Merrymount is a caring organization committed to providing around the clock support and crisis care for children and families. We deliver responsive and innovative services and programs to strengthen children and their families in times of transition.

VISION

Merrymount will be a recognized and respected leader in the field of crisis support and transition services for children and families.

VALUES

- Compassion • Keeping children and families together
- Safe environment • Unique, customized solutions • Consultative
- Proactive partnerships • Professional

Year in Review

Warming Spirits

Many thanks to Keeping Kids Warm for their donation of mittens and hats for our Mitten tree.



Rainbow Bright

Merrymount's Lobby and Boardroom were given a refresh.



Movie Night!

The children at Merrymount made their very own drive-in vehicles to watch movies. They even made their own concession stand.



Budding Artists!

Over March Break, the children created their own art show.



Program Highlights

Intake Department

The Intake Department has been working with families virtually for the past year. We continue to adapt our services to best meet the needs of families while following COVID guidelines. With accreditation approaching the Intake Team is working in a hybrid model - staff are working a few days a week in the building to maintain files and complete file audits. We look forward to meeting with families in person when it is safe to do so.



Top Reasons Families Use Merrymount

- Mental Health Issues
- Family Violence
- Family Breakdown
- Physical Illness of Caregiver
- Addiction
- Chronic Stress
- Shelter Issues
- Isolation

Children's Groups

Anxiety to Resilience
Heroes

© Making Mindfulness Matter M3
Mom's House Dad's House
Understanding ADHD

Parenting Groups

Anxiety to Resilience
Building Families
Circle of Security

© Making Mindfulness Matter M3
Parenting and Separation/Divorce
Parenting Preschoolers
Parent Talk
Understanding ADHD

Parenting and Children's Groups

Our groups continued to be offered virtually this year with some return to in-person for the spring round of children's groups run in the elementary schools. We have been able to adapt and offer all of our 8 parenting groups, as well as our 5 children's groups, to a virtual format to meet the needs of our families.

We welcome the ability to bring parents and children together in person once again, but we will also respect the voices of families who have told us they feel safe and comfortable with virtual programming. While technology creates some barriers to participation, it also reduces other barriers, and we will carefully consider all options as we move forward.



The two programs listed below focus on offering services that are responsive and supportive to families who have a child/children with mental health challenges or are at risk of developing challenges with mental health. These programs also support families and children who have experienced trauma, toxic stress, and/or life experiences that increase risk.

The Crisis Residential/Respite Program

The Crisis Residential/Respite Program continues to operate with a limited capacity of 9 beds open. There are 9 bedrooms in the residential area, allowing each child to have their own room. If there are siblings that can share a bedroom, the capacity can increase to twelve beds open. Staff continue to be diligent in following the congregate care COVID-19 guidelines outlined by the Ministry of Children, Community and Social Services. During this unprecedented time, the staff continue to rise to the challenge each and every day to deliver a high quality program for the children with a focus on building resiliency, coping strategies, problem solving skills, life skills and social skills. The families and children have been very appreciative that this program has continued to offer the respite services they require in order to build and maintain a strong and healthy family. Admissions and discharges have been carefully planned and scheduled in order to maintain cohorts by keeping the same children together in order to minimize exposure during each stay, to avoid crowding and allow time for screening. We look forward to returning to full capacity with all eighteen beds open and in being able to respond to emergency/crisis situations in a timely manner as soon as it is safe to do so and COVID-19 guidelines allow.

The Family and Child Support Program

The Family and Child Support Program continues to operate with a limited capacity in order to maintain cohorts and adhere to COVID-19 guidelines. This program provides respite and emergency/crisis support in a licensed child care setting for infants, toddlers and preschool children. This program provides service to the children in our residential program who transition into this program during the daytime hours, children from the community and the children of the teen parents attending the onsite Thames Valley Alternative Secondary School program. The staff continue to be dedicated and skilled in providing a program that is responsive to the needs of the children with a focus on building resiliency, emotion regulation skills, mindfulness and social skills. Our staff utilize creative and diverse activities to meet the individual needs of each child in the program. We work collaboratively with the parents/caregivers in order to promote the best outcomes for the child and family. We look forward to returning to full capacity as soon as it is safe to do so for the children and staff in the program.

Families and Infants Together

The Families and Infants Together program has continued to serve our community, providing service coordination and a wide variety of supports for families facing multiple challenges. We have gradually returned to in-person services but will continue to use technology to reach families and to bring a team together when necessary; video conferencing has offered us new ways to gather safely and effectively.

Mutual Aid Parenting Program and Community Action Program for Children

All of our group programs continue to be active this year, using a hybrid model of in-person and virtual services. The Mutual Aid Parenting Program empowers parents to share their challenges, successes and needs in a safe and supportive environment. The Community Action Program for Children program offers a variety of workshops and events for families focusing on health, nutrition, safety, literacy and numeracy.

Supervised Access Program

The Supervised Access Program has continued to serve our community, providing supervised parenting time and supervised exchange transfers in London-Middlesex, St. Thomas-Elgin, and Woodstock-Oxford. Supervised parenting time provides an opportunity for non-residential parents to spend time with their children on-site. Supervised exchanges provide a safe transfer of children between parents for off-site parenting time. Our staff continue to follow all COVID-19 guidelines and have been able to provide in-person services at a limited capacity. Along with in-person services the St. Thomas-Elgin and Woodstock-Oxford locations have been providing supervised parenting time using a virtual platform throughout the pandemic. We have been fortunate to continue providing parenting time with limited interruptions and we look forward to returning to full capacity in a timely manner.

All Kids Belong

The All Kids Belong program is excited to have returned to full, in-person services. We continue to follow all pandemic protocols while we provide special needs



all kids belong

Inclusion Support Services

resourcing to licensed child care, before and after school care and authorized recreational programs throughout London-Middlesex

and St. Thomas-Elgin. The heart of our program is the provision of consultation services to programs who are supporting children with special needs, so we are thrilled to be delivering services in person again.

However, we're also grateful to have been able to expand other aspects of our program through technology, and we're now able to offer information and courses on a variety of topics related to special needs on an online platform.

Family Centre Argyle

In early 2022 we saw the sun set on our involvement with Family Centre Argyle after many years of providing service and support to the Argyle



community. It was time for us to transition leadership to another organization, and we are thrilled that LUSO has taken the reins. Merrymount staff remained enthusiastic and resilient through a year of COVID-19 restrictions and challenges, and we thank them for their service.

For more information about our programs and services, please visit our website: merrymount.on.ca

Community Partners

Thames Valley Alternative Secondary School

Prior to the pandemic, Merrymount provided weekly parenting classes and daily childcare spaces for the students, which allowed them to be supported as moms while working towards their OSSD. Students have also had access to various workshops and clinics run by Merrymount, as well as supports from the Mary J. Wright Research and Education Centre. The program had been growing and improving every year, due to the wonderful Merrymount staff and dedicated students.

For the second pandemic year, Merrymount once again generously opened its doors and offered daycare and lunches to our students in September. Precautions were taken, including enhanced cleaning and the addition of HEPA filtration units within the classroom and throughout Merrymount.

In spite of community services and Thames Valley District School Board schools making many referrals, there have only been a handful who have found success returning to in-person learning. Sally Pieprzak, Educational Assistant and I have been in touch with all our students and they seem to be doing well, though their primary focus has been more on day-to-day life rather than academics. Nonetheless, we had one student graduate in December.

I anticipate the next school year to involve rebuilding the program and determining our new operational normal. Whatever the year might bring, I look forward to returning to Merrymount and my students for the 2022-2023 school year.

*Tina Lirette, Thames Valley Alternative
Secondary School Teacher*

2020-2021 OSSD Grads

Heidi Biemans



Awards

Annual Community Champion

Awarded to a community member for their outstanding contribution to Merrymount.

Ironstone Building Company has been a strong supporter of Merrymount's Crisis Residential/Respite Program. Their support has helped numerous children and families in our community who have needed our services.



Ironstone Building Company has been building new homes and townhomes in this community since 2010 and supports local charities through the Ironstone Impact Awards. Their contributions to Merrymount and the community have made a difference. Dave Stimac, Ironstone President & Co-founder stated *"We are born and raised Londoners with a strong attachment to the city. We build here, we employ trades and suppliers here and we know organizations are having a hard time."*

Thank you Ironstone Building Company for your dedication to Merrymount and the city of London.

Ailene Wittstein Legacy Award

Awarded to a Merrymount volunteer for their outstanding contribution to Merrymount.



Lisa Vercillo was first introduced to Merrymount twenty years ago through her work with Magenta Insurance Professionals overseeing Merrymount's insurance needs. Lisa has also been involved as a volunteer on Merrymount's Gala Committee since 2015. Lisa has been instrumental in booking the entertainment for the Gala over the years - knowing just the right person/band that can give our Gala an added touch. Lisa is always eager to lend a hand and open doors to make the gala a success.

When asked what motivates Lisa to continue as a volunteer for the Merrymount Gala she said: *"it all comes down to the great work the team at Merrymount provides for the children and families of London. It takes a village and MONEY to make it happen and the funds from the gala help support that."*

When Lisa is not working, she supports a variety of other not-for-profits in the community, previously supporting Epilepsy Southwestern Ontario for many years. Currently, Lisa is the Chair of the Insurance Institute of Southwestern Ontario, and volunteers as a presenter/educator with the London Small Business Centre.

Lisa – You are a joy to work with and we appreciate all of the support you provide to our organization and to the community at large!

The Terrielyn Kluge Children's Award

In honour of the memory of Terrielyn through the generous donations of her families and friends. Terrielyn believed every child should be able to freely laugh out loud.

This year's award recipient Lee-Anne comes to Merrymount for respite in our Crisis Residential/Respite Program. Lee-Anne is described as thoughtful, inclusive, and welcoming to those around her. Lee-Anne often engages with the younger children who come to Merrymount, offering assistance when needed. Lee-Anne also enjoys interacting with staff and has a great sense of humour. Lee-Anne is also fluent in sign language, as that is how she communicates with her mother who is deaf. Lee-Anne is a natural born leader and teaches the other children to sign when she is at Merrymount. Lee-Anne has expressed to staff that she would like to volunteer at Merrymount when she is older.

Lee-Anne will be receiving a gift basket full of fun activities and gift cards to utilize this summer.

Our People

Merrymount Centre Board of Directors

Paul Romanson

Chair

Tori Laird

Vice Chair

Bill Berg

Past Chair

David Brown

Secretary

Phillip Mock

Treasurer

Louise Koza

Board Member

Michael Leff

Board Member

Michael Myles

Board Member

Olaf Plotzke

Board Member

Melissa Scott

Board Member

Adam Steele

Board Member

Merrymount Foundation Board of Directors

Louise Koza

Chair

Gerry Marcus

Past Chair

Anwar Dean

Board Member

Tori Laird

Board Member

Ross McCallum

Board Member

Ruth Ann McConkey

Board Member

Phillip Mock

Board Member

Robert Ng

Board Member

Rob Ritchie

Board Member

Paul Romanson

Board Member

Executive Director

Paul Howarth

Directors

Richard Macgregor

Danielle Stonehouse

Managers

Lee-Anne Cross

Kim Lamport

Lisa Sortun

Coordinators

Anne Brooks

Amanda Bruyns

Angie Ceneviva

Amanda Colborne

Lisa Jackson-Lumley

Wendy Tapp-Moore

Staff

Yvette Aconito

Katia Al Najjar

Katie Ashton

Melissa Ashton

Angela Balcom

Angelica Baldinelli

Deborah Bloomfield

Shanna Booth

Aaron Botosan

Natalie Brock

Kelley Cates

Kelly Clark

Dina Collard

Tarra Cook

Jennifer Craigan

Sherri Daley

Dora Dawkins

Lori Dean

Megan Dejong

Maria Del Vasto

Geri Dibsedale

Lynn Donaldson

Tiphonie Doxtator

Michelle Enns

Katie Foote

Lisa Foxcroft

Dara Francois

Laura French

Jennifer Graham

Dakota Grass

Linda Grass

Kathleen Grealis

Sabrina Handy

Crystal Hawkins

Shannon Heslop

Kristen Hunt

Alice Kolendowski

Ariel Landon

Nancy Liabotis

Carolyn Little

Mario Lucci

Akifa Malik

Lori Masterson

Patricia Mazariegos

Sandi McAlpine-
McCullough

Teri McCullagh

Heather McDowall

Brooke McGuire

Patricia Meek

Doug Moore

Eliana Morales

Bob Mullins

Tina Neeb

Teresa Nicholson

Kathleen Nutt

Beth O'Hagan

Rosemary Osborne

Marisela Palacios

Maria Park

Sean Quin

Nurdevlet Rasheed

Yenny Recinos

Monica Rose

Tanya Ross

Rebecca Salton

Felicity Santiago

Karen Scott

Jennifer Smale

Karen Smith

Jerry Smithers

Heather Soares

Sandra Stewart

Barb Szczukowski

Beatriz Tamayo

Kevin Thompson

Rosemary Van Wieren

Brenda Veilleux

Kayla Vetere

Maria Warren

Becky Wilfong

Jennifer Williams

Patricia Wistow

Lesley Wright

Our team's
commitment,
dedication and heart
make Merrymount
such a special place -
thank you for all that
you do!

Retirements

Teresa Liwosz hung up her Intake hat and happily retired in November 2021. Teresa was a dedicated Merrymount employee for 31 years and over her career she supported hundreds of Merrymount families in many different programs.

We will miss Teresa's steady calm manner and the meticulous nature she always showed in her daily work. Teresa had an unwavering kindness and sense of empathy that she showed to all the families that she worked with.

Teresa, we wish you all the happiness in retirement where we hope that you have plenty of time to devote to your love of singing, gardening and walking!



THANK YOU!

Staff Recognition Awards

10 Years

Aaron Botosan
Teresa Nicholson

20 Years

Tanya Ross
Dina Collard
Kelly Clark

30 Years

Nancy Liabotis



Special Events & Fundraisers



Golf Fore a Cause

The Annual Merrymount Golf Classic raised over **\$27,000** for the Crisis Residential/Respite Program.

Pictured left: Anne Brooks, Christine Borrows, Ally Hess & Brianne Oswald at the Annual Merrymount Golf Classic


merrymount
 family support and crisis centre

Thank you to our 2021 sponsors!


canada life


affiniti wealth


Marcus & Associates
Chartered Professional Accountants


Hoare Dalton
Litigation & Arbitration Services


CONSYS GROUP
INC


ACCESS STORAGE


SOUTHSIDE GROUP


OXFORD


BEACHCOMBER
LONDON


IG PRIVATE WEALTH
MANAGEMENT
MIGNAULT & ASSOCIATES


PIB
PROGRAMMED INSURANCE BROKERS INC.


BLUESTONE
PROPERTIES


CINTAS
READY FOR THE WORK DAY


Sutton **CWB** **National Leasing**


Blewett & Associates
Building Better Benefits


Group Preferred Realty Inc., Brokerage
Independently Owned & Operated
Scott Rumas, Broker


M&T
PRINTING GROUP


Tim Hortons


BMW MINI London




Wrapping up a Merry season!

Thank you to everyone who supported and volunteered their time at The Merry Market's gift wrapping fundraiser at 100 Kellogg Lane. We appreciate your support!

Our Generous Donors

Thank you to our donors who so generously supported Merrymount
between April 1, 2021 & March 31, 2022

\$100,000

The Daniel J. and Ann Marie Thompson
Foundation

\$10,000 - \$24,999

The Arcangelo Rea Family Foundation
Congregation of the Sisters of
St. Joseph in Canada
Ironstone Building Company Inc.
Wilf and Jean Bell Foundation

\$5,000 - \$9,999

Mr. David Atkinson
Mr. Douglas and Mrs. Susanne Berk
CIBC Wood Gundy
Crane Fund for Widows and Children
Allan & Susan Edwards Family Fund
The Jack and Barbara Hay Foundation
Lutheran Social Services (London)
Mr. Ross McCallum and
Ms. Karin Van Ryswyk

\$1,000 - \$4,999

Arthur J. Gallagher Insurance &
Risk Management
Mrs. Celine Bourbonnais - MacDonald
and Mr. Murray MacDonald
Canada Life
Mark Cooper Insurance;
Financial Services Incorporated
Daylight Chapter - Eastern Star
Diocese of London
Mrs. Martha and Mr. Scott Disney
Mr. Allan and Mrs. Elizabeth Drewlo
Mr. Laurence DuCharme
ETFO Thames Valley Occasional
Teacher's Local
Fidelity Investments Canada
Finch Auto Group
The Forever Legacy Foundation
Great Lakes Copper Inc.
Mrs. Veronica Greig
Mrs. Cheryl Heizer
Ms. Judith Hoenich
Mr. & Mrs. Hogan

Ms. Grace King
Mrs. Mary Margaret and
Mr. Gary Koreen
Ms. Tori Laird
Ms. Kathryn and Dr. Robert Lannigan
Mr. Brian and Mrs. Sharon Lessard
Estate of Helen Marie Lewis
London Police Association
Ms. Sofia Lytwynec
Mr. Peter &
Mrs. Peggy Ann Mastorakos
Mr. Bill and Mrs. Joan McConnell
Ms. Myrna McDermid
Dr. Alison Meek
Middlesex Family Lawyers Association
Mr. Chris and Mrs. Andrea Nicholls
Mrs. Mary and Mr. Maurice Pellarin
Mr. Michael and
Mrs. Jennifer Patterson
Ms. Kim Price
Ms. Barbara René - Noël
Ms. Pat Riehl
Dr. Paul and Mrs. Karen Romanson
Mr. Rob and Mrs. Cheryl Ritchie
Mrs. Linda and Dr. Cecil Rorabeck
Mr. Troy Van Nest
Mr. Paul Vandenbosch and
Ms. Cindy Wright
Mrs. Ruth Vickers
Nicolaas and Regina
Veenboer Foundation
Mr. Morgan and
Mrs. Courtney Williston

\$500- \$999

Mrs. Angela and Mr. Matthew Baer
Mr. Vic Dart
Mr. Joseph and Mrs. Johanna Ferket
St. George's Catholic Women's League
Ms. Carri Hand
Mrs. Beverly and Dr. Michael Harper
Mrs. Sherry Hogan
Kiwans Club - Forest City
Mrs. Jan and Dr. Richard Lubell
Wayne P. MacDonald Human Fund
Ms. Judith McDonald

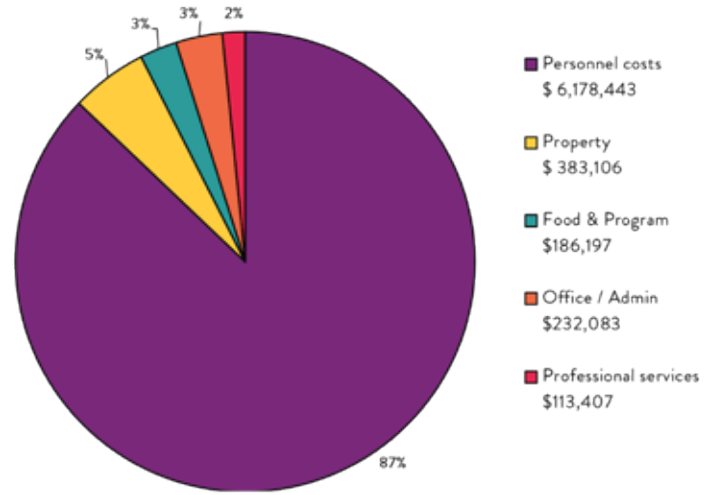
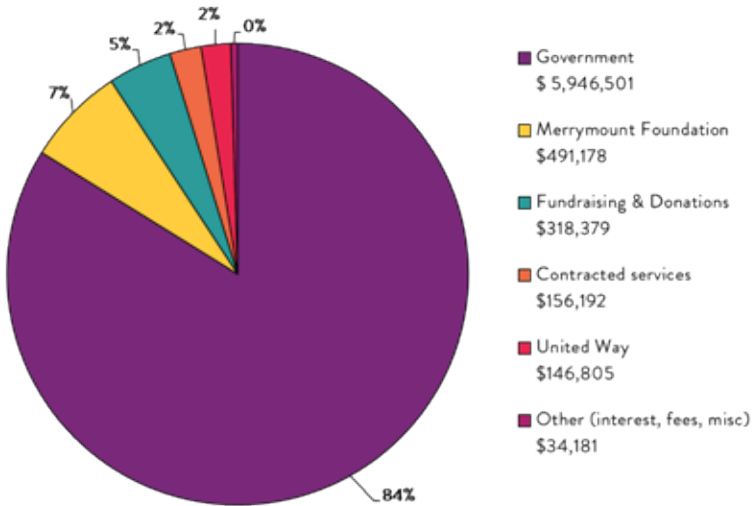
Mrs. Wendy Smith
Ms. Wanda Terrio
Ms. Jodie Rackham
Raital Limited
The Royal Trust Company
Mr. Norman and
Mrs. Jennifer Thompson
Miss Irene Toth
Ms. Stephanie Warner
Mrs. Ruth and Mr. David Werezak
Mrs. Nancy and Mr. James Wilton

While every attempt has
been made to ensure
accuracy, we apologize for
any errors or omissions.
Please let us know of any
changes.

Financials

CONSOLIDATED REVENUE - \$7,093,236
FOR THE YEAR ENDED MARCH 31, 2022

CONSOLIDATED EXPENDITURES - \$7,093,236
FOR THE YEAR ENDED MARCH 31, 2022



DID YOU KNOW...

Only 7 of our 18 beds are funded by the Government.

It costs \$274 per child, per night, to deliver 24-hour care through our Crisis Residential/ Respite Program.



For more information about our funding or on how you can make a difference, please contact us at 519-434-6848 ext.245.

If you or someone you know is in crisis, please call 519-434-6848.



1064 Colborne Street
London, ON N6A 4B3

T 519-434-6848
F 519-434-6851

Charitable Registration #
107692303RR0001

www.merrymount.on.ca



@Merrymountchildrenscentre



@merrymountcentre



@Merrymount_



Merrymount-childrens-centre